

# CERTIFICATE OF LOCATION OF GOVERNMENT CORNER

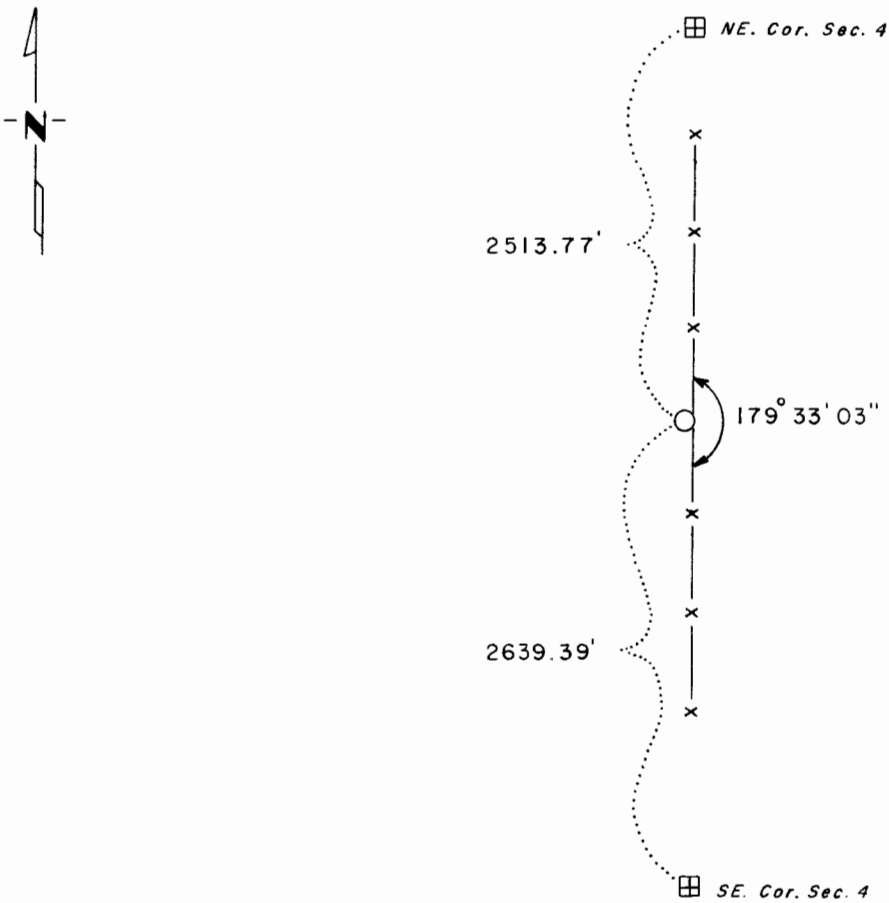
East Quarter Corner of Section 4, Township 105, Range 41, 5th. P.M.

STATE OF MINNESOTA, County of MURRAY

At the corner location shown on the sketch:

- On 7-27-77 found a Corner Fence Post  
DATE
- left monument as found,  lowered monument,  removed monument (explain)
- On 9-20-77 placed a D.N.R. Property Monument 0.2' West of Cor. Fen. Post  
DATE

### SKETCH OF REFERENCE TIES



Statement of evidence relative to this corner location is on back of page.

I hereby certify that this document and the data contained herein was prepared by me or under my direct supervision.

Sandy H. Stevenson 7-3-78  
SIGNATURE DATE

Registration No. 12684

- Land Surveyor,  Professional Engineer
- County Surveyor,  County Engineer

#### OFFICE OF THE REGISTER OF DEEDS

County of \_\_\_\_\_

I hereby certify that this document was filed in the Reg. of Deeds office at \_\_\_\_\_ .M. on the \_\_\_\_\_ day of \_\_\_\_\_ A.D., 19 \_\_\_\_\_

Register of Deeds \_\_\_\_\_

By \_\_\_\_\_, Deputy

DOCUMENT NO. \_\_\_\_\_

Statement of Evidence:

East Quarter Corner Section 4, T 105 R 41 Murray County

This corner was originally established by the U.S. General Land Office survey in 1861. The government notes show corner marked with a wood post set in mound of earth with pits and trench dug around the mound.

In May, 1977 the DNR Bureau of Engineering contacted the Murray County Offices of the Recorder, Auditor and Engineer for corner information.

The only information found was a survey by County Highway personnel in the southeast quarter Sec. 4. They make no mention of this corner.

On July 27, 1977 the DNR looked for this corner and found a corner fence post with fences going north, south and east. It also lines up with a fence west 600'+ away. We accept this fence corner as the obliterated position of this corner. It falls 26.5'+ north and 9'+ west of the lost position. A DNR property corner monument was set 0.2' west of the corner fence post for this corner. No ties were available.

SS

164270

State of Minnesota, }  
County of Murray, } ss.

I hereby certify that the within instrument  
was filed in this office for record on the  
7th day of August A.D. 19 81

at 8:30 o'clock A.M., and was duly re-  
corded as Microfilm Document No. 164270

Willard W. Ohme  
County Recorder